



Richard Brantley  
Senior Vice President, Operations  
P.O. Box 553  
Midland, TX 79702-0553

Tel: (432) 684-4404  
Fax: (432) 683-8780

## University Lands Rangeland Seed Mixtures by County

(Revised August 1, 2022)

University Lands (UL) allows only pre-approved seed mixtures to be used when reseeding damaged rangelands. Approved seed mixtures are prescribed relative to the native rangeland on a county-by-county basis. **No substitutions are to be made unless approved by the UL Range Conservationist assigned to the county where reseeding is required. Upon request, UL can provide alternative seed species to replace required seed species that may be unavailable.** Additionally, Pearl or Foxtail Millet can also be added to any of the following seed mixtures, as a filler/nurse plant.

**To promote environmental stewardship and support the lessee's ES&G goals**, University Lands encourages the use of **pollinator friendly seed species** when reseeding rangelands in West Texas. If operators are interested in adding **pollinator friendly seed(s)** to their seed mix, please contact University Lands to receive written approval before reseeding.

**A map of the UL Range Conservationists coverage areas and contact information is included in this document, but can also be found on the UL website at: <http://www.utlands.utsystem.edu/>**

### Seed Supplies:

Some local Soil and Water Conservation District (SWCD) personnel are familiar with UL's reseeding requirements and usually have approved seed mixtures available for sale. **Please note that the county SWCD's typically shares office space with the USDA-Natural Resource Conservation Service (NRCS).**

To buy seed, please call the SWCD office listed for the county where reseeding is required and ask for the University Lands approved seed mixture. Technical assistance may also be obtained from the Natural Resource Conservation Service personnel at the same phone number.

**Soil and Water Conservation District Offices                      Phone #'s**

Andrews, Dawson, Gaines, & Martin Counties	432-523-4760 X3
Crockett County	325-392-2301 X3
Culberson & Hudspeth Counties	432-283-2277 X3
Crane & Ector Counties	432-332-9541 X3
El Paso County	915-855-0884 X3
Irion, Reagan, & Upton Counties	325-884-2182 X3
Loving, Ward, & Winkler Counties	432-943-4462 X3
Pecos County	432-336-5206 X3
Schleicher County	325-853-2720 X3
Terrell County	432-345-2595 X3

**Preparation of seed bed:**

Leave area to be reseeded somewhat rough. Roughness will allow rain to be trapped on the surface of the seeded area and will allow seedlings a better chance of survival. Pack or firm the seedbed. Establishing native grasses is much different than agricultural crops, as the seedbed must be firm. Once packed, seed can either be Broadcast or drilled per the recommendation of the UL Range Conservationist assigned to the area. Follow up by packing the area again with tires or tracks that will leave a firm seedbed with small depressions to hold moisture.

In sandy soils a mulch or litter may be required to control wind erosion and conserve soil moisture while seedlings are becoming established. Hay, cotton burs, or other suitable material may be used.

**Seed by County:**

The following seed mixture is based on a Pure Live Seed (PLS) basis. Calibration of the seeding rate will be done based on the bulk weight of the seed. Bulk weight and the percentage of PLS can be found on the seed tickets, which are attached to the seed bags. To determine the amount of PLS, multiply the PLS percentage by the bulk weight of the bag. If Pearl or Foxtail Millet are added in the regular mix, add 0.75 lbs. per acre. Information on Pollinator friendly species can be provided upon request. The following seed mixtures are the amount of PLS required per acre for adequate reseeding.

**Andrews County**

<b>Grass Species</b>	<b>Pounds Pure Live Seed / Acre (PLS)</b>
Sideoats Grama	1.1
Blue Grama	0.4
Plains Bristlegrass	0.8
Sand Dropseed	0.3
Green Sprangletop	1.7
<b>Total:</b>	<b>4.3</b>

**Crane County**

<b>Grass Species</b>	<b>Pounds Pure Live Seed / Acre (PLS)</b>
Sideoats Grama	1.1
Blue Grama	0.4
Plains Bristlegrass	0.8
Sand Dropseed	0.3
Green Sprangletop	1.7
<b>Total:</b>	<b>4.3</b>

**Crockett County**

<b>Grass Species</b>	<b>Pounds Pure Live Seed / Acre (PLS)</b>
Sideoats Grama	1.1
Blue Grama	0.4
Plains Bristlegrass	0.8
Sand Dropseed	0.3
Green Sprangletop	1.7
<b>Total:</b>	<b>4.3</b>

**Culberson County**

<b>Grass Species</b>	<b>Pounds Pure Live Seed / Acre (PLS)</b>
Sideoats Grama	1.1
Blue Grama	0.4
Plains Bristlegrass	0.8
Sand Dropseed	0.3
Green Sprangletop	1.7
<b>Total:</b>	<b>4.3</b>

**Dawson County**

<b>Grass Species</b>	<b>Pounds Pure Live Seed / Acre (PLS)</b>
Sideoats Grama	1.1
Blue Grama	0.4
Plains Bristlegrass	0.8
Sand Dropseed	0.3
Green Sprangletop	1.7
<b>Total:</b>	<b>4.3</b>

**Ector County**

<b>Grass Species</b>	<b>Pounds Pure Live Seed / Acre (PLS)</b>
Sideoats Grama	1.1
Blue Grama	0.4
Plains Bristlegrass	0.8
Sand Dropseed	0.3
Green Sprangletop	1.7
<b>Total:</b>	<b>4.3</b>

**El Paso County**

<b>Grass Species</b>	<b>Pounds Pure Live Seed / Acre (PLS)</b>
Sideoats Grama	1.1
Blue Grama	0.4
Plains Bristlegrass	0.8
Sand Dropseed	0.3
Green Sprangletop	1.7
<b>Total:</b>	<b>4.3</b>

**Gaines County**

<b>Grass Species</b>	<b>Pounds Pure Live Seed / Acre (PLS)</b>
Sideoats Grama	1.1
Blue Grama	0.4
Plains Bristlegrass	0.8
Sand Dropseed	0.3
Green Sprangletop	1.7
<b>Total:</b>	<b>4.3</b>

**Hudspeth County**

<b>Grass Species</b>	<b>Pounds Pure Live Seed / Acre (PLS)</b>
Sideoats Grama	1.1
Blue Grama	0.4
Plains Bristlegrass	0.8
Sand Dropseed	0.3
Green Sprangletop	1.7
<b>Total:</b>	<b>4.3</b>

**Irion County**

<b>Grass Species</b>	<b>Pounds Pure Live Seed / Acre (PLS)</b>
Sideoats Grama	0.9
Buffalograss (dehulled)	0.6
Plains Bristlegrass	0.6
Little Bluestem	0.7
Sand Dropseed	0.2
Green Sprangletop	1.7
<b>Total:</b>	<b>4.7</b>

**Loving County**

<b>Grass Species</b>	<b>Pounds Pure Live Seed / Acre (PLS)</b>
Sideoats Grama	1.1
Blue Grama	0.4
Plains Bristlegrass	0.8
Sand Dropseed	0.3
Green Sprangletop	1.7
<b>Total:</b>	<b>4.3</b>

**Martin County**

<b>Grass Species</b>	<b>Pounds Pure Live Seed / Acre (PLS)</b>
Sideoats Grama	1.1
Blue Grama	0.4
Plains Bristlegrass	0.8
Sand Dropseed	0.3
Green Sprangletop	1.7
<b>Total:</b>	<b>4.3</b>

**Pecos County**

<b>Grass Species</b>	<b>Pounds Pure Live Seed / Acre (PLS)</b>
Sideoats Grama	1.1
Blue Grama	0.4
Plains Bristlegrass	0.8
Sand Dropseed	0.3
Green Sprangletop	1.7
<b>Total:</b>	<b>4.3</b>

**Reagan County**

<b>Grass Species</b>	<b>Pounds Pure Live Seed / Acre (PLS)</b>
Sideoats Grama	1.1
Blue Grama	0.4
Plains Bristlegrass	0.8
Sand Dropseed	0.3
Green Sprangletop	1.7
<b>Total:</b>	<b>4.3</b>

**Schleicher County**

<b>Grass Species</b>	<b>Pounds Pure Live Seed / Acre (PLS)</b>
Sideoats Grama	0.9
Buffalograss (dehulled)	0.6
Plains Bristlegrass	0.6
Little Bluestem	0.7
Sand Dropseed	0.2
Green Sprangletop	1.7
<b>Total:</b>	<b>4.7</b>

**Terrell County**

<b>Grass Species</b>	<b>Pounds Pure Live Seed / Acre (PLS)</b>
Sideoats Grama	1.1
Blue Grama	0.4
Plains Bristlegrass	0.8
Sand Dropseed	0.3
Green Sprangletop	1.7
<b>Total:</b>	<b>4.3</b>

**Upton County**

<b>Grass Species</b>	<b>Pounds Pure Live Seed / Acre (PLS)</b>
Sideoats Grama	1.1
Blue Grama	0.4
Plains Bristlegrass	0.8
Sand Dropseed	0.3
Green Sprangletop	1.7
<b>Total:</b>	<b>4.3</b>

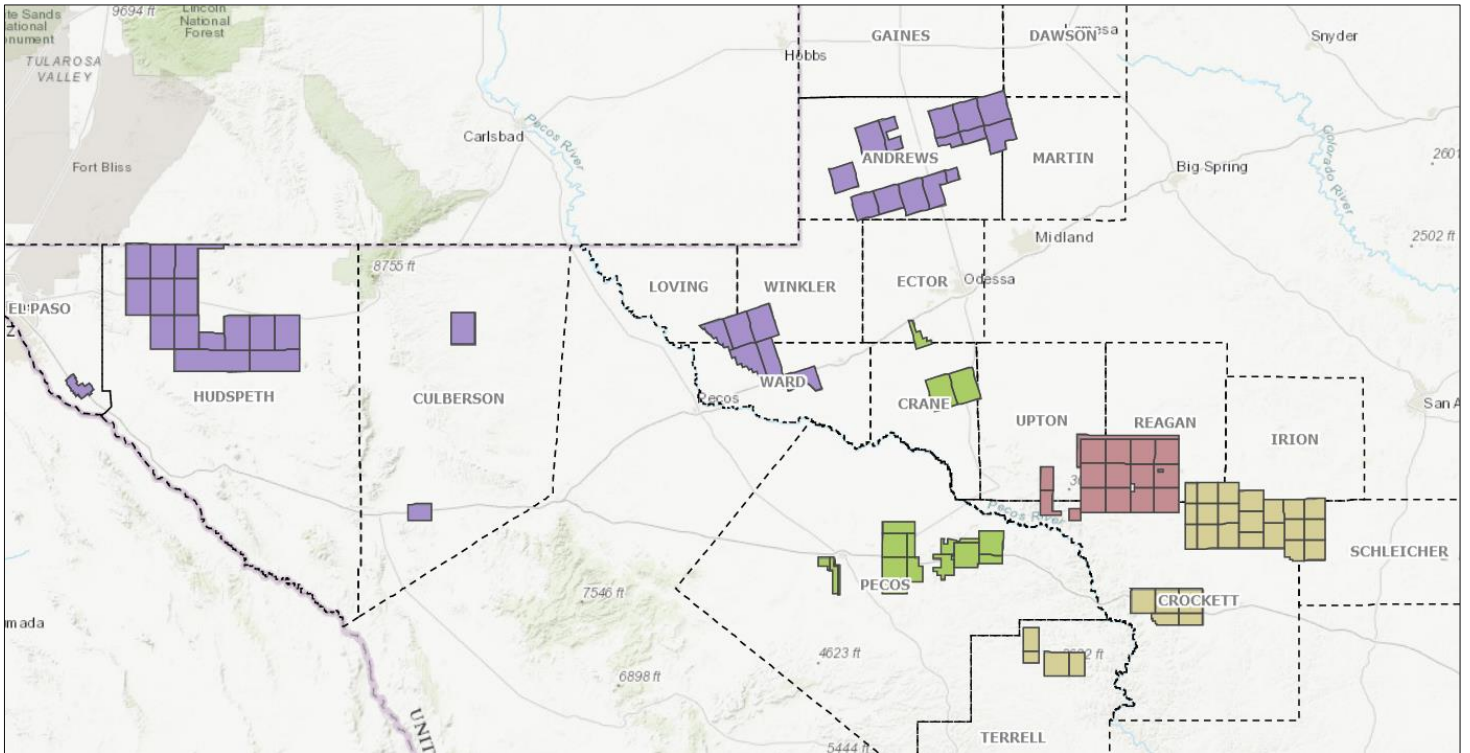
**Ward County**

<b>Grass Species</b>	<b>Pounds Pure Live Seed / Acre (PLS)</b>
Sideoats Grama	1.1
Blue Grama	0.4
Plains Bristlegrass	0.8
Sand Dropseed	0.3
Green Sprangletop	1.7
<b>Total:</b>	<b>4.3</b>



**Winkler County**

<b>Grass Species</b>	<b>Pounds Pure Live Seed / Acre (PLS)</b>
Sideoats Grama	1.1
Blue Grama	0.4
Plains Bristlegrass	0.8
Sand Dropseed	0.3
Green Sprangletop	1.7
<b>Total:</b>	<b>4.3</b>



	<p>Drew McEachern  <a href="mailto:dmceachern@utsystem.edu">dmceachern@utsystem.edu</a></p>	Landman, Surface	(432) 634-4108
	<p>Ryan Kennedy  <a href="mailto:rkennedy@utsystem.edu">rkennedy@utsystem.edu</a></p>	Associate Landman, Surface	(325) 812-3623
	<p>Ryan Kennedy  <a href="mailto:rkennedy@utsystem.edu">rkennedy@utsystem.edu</a></p>	Associate Landman, Surface	(325) 812-3623
	<p>Greg Lundgren  <a href="mailto:glundgren@utsystem.edu">glundgren@utsystem.edu</a></p>	Associate Landman, Surface	(432) 813-9527